



friendship force
WISCONSIN - MADISON



www.ffwis.org

November 2019

A NOTE FROM THE PRESIDENT

The recent inbound journey from Japan reminded me once again of all the reasons that I travel and host with Friendship Force. There are plenty of travel companies that will offer you a meal or perhaps one evening with a local family as part of a group but very few allow you to truly connect to people the way Friendship Force does. One year ago, George and I were met in Japan by Kayoko and Yoshi. We spent days and evenings with Takako, Chikako, Michiko and others. We chatted over breakfast each morning. We laughed at our struggles with communication and simply enjoyed seeing Japan as their guests. Just a year later we saw all of these familiar faces coming down the escalator at the Madison airport. These weren't strangers we were greeting but old friends and I was so happy to see them.

If we travelled with a tour bus, we would cover more territory and get glimpses of every historic building, garden or tourist site. On the other hand, Friendship Force trades geography in favor of a true cultural experience. What we value are the kind of friendships and true cultural experiences that we gain through FFI's home-hosted travel. So after a wonderful week in Madison, we said a tearful goodbye to our ambassadors from Japan.

A giant THANK YOU to our incoming journey leaders Martha McGregor and Pat Fleming. Thanks to Stephanie Sorensen, our journey manager for all the behind the scenes support. Thank you to all of the hosts, dinner host, cooks, drivers, day hosts and members that participated and donated their time.

The Board is busy planning our journeys, activities, budget, and goals for 2020 and ***we would like to have a conversation with you about our plans on December 4th at the Fitchburg library.*** See the separate announcement. Please plan to come.

We have set the ***date for the annual meeting for April 4th, 2020.*** Please put it on your calendar now.

Looking forward to seeing all of you in December.

In Friendship,
Sandi Wysock
sandrawysock@msn.com

CALENDAR OF EVENTS

Monthly Board Meeting

The FFI Madison Board meets the second Wednesday of the month @ 12:30 pm at Bridge Point Waunona Community Center, 1917 Lake Point Dr, Monona.

No Board meeting in July 2019 – VACATION!

Other Activities

2019

October 27 – November 10: Australia Outbound Journey

November 21: Second Harvest Food Bank. See "Activities"

November 15: Book Club at the home of Helen Rugowski. See "Activities"

December 19: Second Harvest Food Bank. See "Activities"

2020

April: New Zealand / New Caledonia Outbound Journey See: "Journeys"

September 14-21: Global Bike Journey. See: "Journeys"

Explore • Understand • Serve®

* HOSTING * HOSTING * HOSTING *



We would like to expand the number of club members who participate in planning, organizing and hosting so that more members have the opportunity to create and follow through with a very rewarding experience. We have experienced people to mentor and provide input and advice.

You don't have to live in a mansion! Your home just needs to be neat and clean with a separate bedroom for the Ambassador - a separate bathroom is optional.

You don't have to be a gourmet cook - you just have to provide breakfast every morning, pack one or two lunches and make one or two dinners.

You don't have to take part in all of the activities. That's what the drivers are for or you can carpool with other hosts.



You'll also find that if you get together with some of the other hosts and their ambassadors for a dinner or a happy hour or tea after a long day it makes it easier on each of you. The emphasis is on making friends, not impressing anyone.



* HOSTING * HOSTING * HOSTING *

• Home hosts

You welcome ambassadors to stay in your home during the Journey and provide sleeping accommodations and meals that are not organized or part of the program. Ambassadors expect to share your lifestyle so as much as possible integrate them into your family life. The simplest things sometimes make the best memories. Hosts are encouraged to participate in the planned activities but can request day hosts to spend time with their Ambassadors

• Day hosts

in addition to spending the day with the ambassador in place of the host, you might also pick up and return an ambassador to the host's home involving a planned activity. Not everyone is available to offer full hosting. A day host might also be a driver for several ambassadors for a given day. It's an opportunity for ambassadors to hear the view of another club member, develop new friends and to share your favorite things about the city of Madison and surrounding area.

• Dinner hosts

You offer your home to ambassadors and their hosts as assigned by the Journey Dinner Coordinator. Dinner hosts may invite other Friendship Force members, as well as family, friends or neighbors. These dinners can be whatever the dinner host decides; potlucks, backyard barbeque, pizza & beer, etc.

• Expenses

Your expenses are the planned activities you choose to attend (though some may be free) and are usually paid in advance by you. Ambassadors have paid a program fee to the club to cover their planned activity expenses. On flexible days and in free time, whatever activities an ambassador expresses an interest in doing are at their expense.

Explore • Understand • Serve®

JOURNEYS

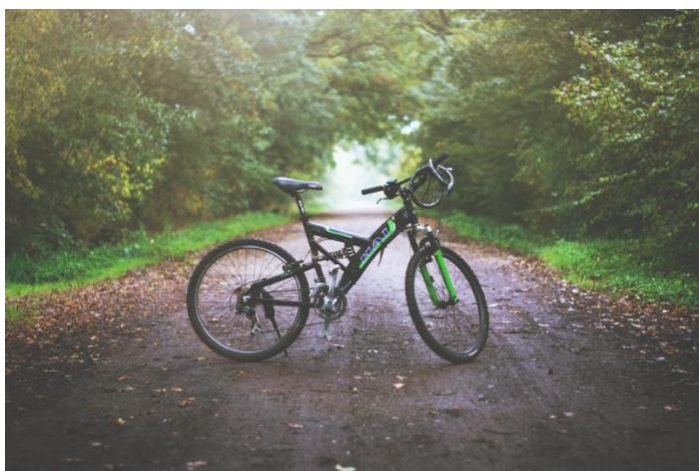
NEW ZEALAND AND NEW CALEDONIA OUTBOUND 2020

Our international outgoing Journey for 2020 will be to New Caledonia and New Zealand in the second half of April. We have selected Ambassadors and they are making flight plans now. We are in communication with both clubs. Dan Eggerding and Maureen Kind are working well together to make this Journey happen.



GLOBAL BIKE JOURNEY 2020 UPDATE

Our active bikers are working on a Global Biking Journey headed by Hank Weiss. We already have over 20 applicants from a variety of places. This will be held **September 14 - 21, 2020**. We will need lots of help with this Journey. You don't need to be a biker - but this does give you some opportunity to brush up on your biking skills. We will need people to help organize a welcome event, small group home hosted dinners, to serve as drivers, and to be "on call" on a particular day to do a pickup if anyone has any issues while biking. We can use many hands on deck. Please put this on your calendar and try to plan around these dates so you can help.



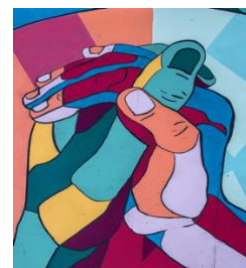
JOURNEYS

JOURNEYS' END

*Goodbye to Friends from Aichi and Dallas
(with thanks to Gov. Evers)*



JOURNEYS WITH OTHER CLUBS AND GLOBAL JOURNEYS



Another opportunity will come from **October 16 to 20, 2020**. The Milwaukee club will be running a leadership workshop mostly for those from new clubs in developing countries. Following that workshop, the Ambassadors will come to Madison from Friday until Tuesday for a brief visit.

We will need helpers to host and work on a committee to plan at least a few group activities to show them what it is like to participate in a Journey.

JOURNEYS WITH OTHER CLUBS AND GLOBAL JOURNEYS

Summer will be relatively quiet this year for us unless other options come along. We have applied for a couple of Open World opportunities and are waiting to hear about those. If you are interested in helping out - even a little bit with one specific task - for any of these incoming Journeys, please contact:

Stephanie Sorensen, Journey Chair
608 819-6646
ssorensen268@gmail.com

There are always opportunities to travel with Friendship Force. If our club's schedule doesn't fit with your plans, consider traveling with other clubs or global journeys. Three of our members are off to Brazil this week and a group just concluded a global journey hiking in Franconia.

These opportunities are listed in the monthly catalogue. You can sign up to receive the catalogue on the Friendship Force International web site.

<https://www.friendshipforce.org/journeys/> Scroll to the bottom and add your email to receive updates and new listings

Journeys listed in the October catalogue include:
3/17 - 4/7 2020 Travel to Australia & New Zealand with Friendship Force of Raleigh

7/12-7/10,2020 Outdoor Adventure in Nebraska for parents/grandparents with children/grandchildren over the age of 12

6/10-6/21,2020 Art, Culture & Gastronomy in Belem and Sao Paulo, Brazil

8/7-8/24, 2020 Eco Journey in Brazil

Details for these and other journeys can be found on the Friendship Force International site under journeys

<https://www.friendshipforce.org/journeys/>

ACTIVITIES

VOLUNTEER/SERVICE

Second Harvest Foodbank

Our Second Harvest schedule is adjusted for the holidays: We will go to Second Harvest on Thursday November 21 and Thursday December 19 from 12:30 to 3:30 pm.

There is unlimited space for volunteers. New members are encouraged to participate, not only to help serve some of the most basic needs of our community but also to meet and get to know other FFI members. Please confirm your participation date(s) with Lois Schulz, FFWM Second Harvest Food Bank Leader, at loisschulz1942@gmail.com



ACTIVITIES

Within our 16 county service area, at least 44,000 children are food insecure from day to day and don't always know where their next meal is coming from. Second Harvest needs the strong support of all of us in order to improve access to nutritious food for these children and their families. (see: www.ourcommunityfoodbank.org)

Adopt a Highway



At 10:00 on September 18, 2019 six members met in Middleton to help Keep America Beautiful. Joining leader Stephanie Vanden Bush in collecting twelve bags of trash were Nancy Brown, Patty Kexel, Marjie and Pete Marion, and Helen Rugowski.

BOOK CLUB



Happy Readers will meet on Monday, November 15 at 7 pm at the home of leader Helen Ann Rugowski to discuss "The Girl Who Smiled Beads" by Clementine Wamariya, about her experiences as Rwandan Genocide survivor and former refugee. Tell Helen you will attend:

Helen Ann Rugowski at
haharrin@hotmail.com /608-841-1087

LETS DINE OUT



At 11:30 September 18 a dozen members met on the Eastside at the Sumo Japanese Steakhouse hibachi grill for a delicious and fun lunch arranged by leader Bobbie Vrooman. There was an onion ring volcano with squirts of saki into our open mouths! Those sharing in the conversation were Kay Babcock, Dan Eggerding, Reta Haring, Gail Holmes, Mary Juckem, Mike Lambert, Martha McGregor, Lisa Simon, Lois Schulz, Richard and Doris Shropshire, and Bobbie Vrooman. Everyone rated the experience and food exceptional!

Explore • Understand • Serve®

OUTDOORS

Let's Walk / Lets Hike



Due to low signup, the date was changed to Sept 13 and Magdi Sebestyen, Kathy Speck and Agnes Rona (and her puppy) enjoyed a walk along the Lakeshore Path.

Let's Bike



On Thursday, September 12, Mary Mastaglio led a group around the Lake monona Loop, ending at Lazy Jane's Cafe on Williamson St. for lunch. Joining Mary were Maureen Kind, Helen Ann Rugowski, and a potential new member.

BOARD NEWS/ACTIVITIES

OCTOBER 9, 2019 BOARD PLANNING MEETING NOTES

As our President mentioned in her Letter this month, the Board is inviting all members to a meeting on December 4, 2019 (Reservation Form is attached to this Newsletter) to give their feedback and comments on the Goals for 2020 that came out of the last Board Meeting.

To give you time to read and reflect, the Friendship Force Wisconsin – Madison Goals for 2020 are attached to this Newsletter.

PLEASE ATTEND – THIS IS AN OPPORTUNITY FOR ALL MEMBERS TO CONNECT WITH THE BOARD AND BE HEARD.

ON-GOING MEMBERSHIP FOCUS

A reminder from July Newsletter: To make contact with a broader range of people, and, of course, more people, the Membership Committee is looking for additional members. Specifically, we would like your participation to meet with new or prospective members to share our story. These meetings would be scheduled as convenient for all involved and either the Committee Chair or another Committee partner would also attend. For more information please contact Helen Ann Rugowski, Membership Chair, at 608-841-1087 or @haharrin@hotmail.com

2020 REGIONAL CONFERENCE

We will continue to remind you about the TFFI 2020 Super-Regional Conference will be in Minneapolis September 18-20, 2020, hosted by FFI Minnesota-Twin Cities. It seems a long way off, but we all like to plan our calendars! Our connections with other FFI groups are vital to developing and expanding our journey relationships and opportunities. We will keep you informed with updates. You can also directly contact Conference Chair Rita Mays: ritamnffi@yahoo.com.

FFI FEE INCREASES

FFI International has increased journey fees as follows:

Journey Type	2019 FFI Fees (USD)	2020 FFI Fees (USD)
International Club-to-Club Journeys (5-7 nights)	\$165 per week for Journeys from the USA	\$170 per week for Journeys from the USA
	\$140 per week for Journeys from all other countries	\$150 per week for Journeys from all other countries
Domestic Club-to-Club Journeys (5-7 nights)	\$10 per night	\$15 per night
EU and Schengen Journeys	\$10 per night	\$15 per night
Stopover Journeys (1-4 nights)	\$20 per night	\$25 per night
Global Journeys	Fees vary	Fees vary

Explore • Understand • Serve®

FRIENDS WE LOST



Dr. Fannie Frazier Hicklin died peacefully at her home in Madison on October 18, 2019.

Born on July 21, 1918 in Talladega, Alabama, Dr. Fannie Frazier Hicklin was a Theatre Department faculty member at UW-Whitewater from 1964 to 1988.

Fannie led our activities committee for over 20 years. She led several journeys, traveled around the world with us, served on the board and on many committees.

As the first African-American faculty member on campus, she directed over fifty theatre productions, and helped to establish Summer Theatre in the Park and the Touring Children's Theatre programs. During her time at Whitewater, she was the Associate Dean of Faculties, Director of Affirmative Action, and Chair of the Theatre/Dance Department. The theatre was dedicated and renamed to honor Dr. Hicklin on April 21, 1996.

Our friend is survived by her two loved felines, Peach and Daisy; her daughter, Ariel Ford; special granddaughter, Yimeng (Eve) Chen; many nieces and nephews; special cousins, Myra Davis, and Connie Frazier; and many dear friends. She was preceded in death by her parents; and her brother, William.

Explore • Understand • Serve®

Membership Meeting
December 4, 2019
6:00 -8:00
Fitchburg Library
5530 Lacy Rd, Fitchburg, WI 53711

Bring bars/cookies or appetizer - Beverage provided

Join us for a discussion about our plans for 2020. Friendship Force of Wisconsin -Madison was one of three Midwestern clubs that did not receive an incoming assignment for 2020. Some of our members have stepped up and created an incoming biking journey for September 2020. We already have 21 applications. We expect to have an Open World delegation assigned by mid-November and we will host a group of new leaders for 3 days in October 2020. Each of these journeys presents us with great opportunities and unique challenges.

We have a number of proposals for new activities ranging from game nights to cultural programming to sharing some activities with Milwaukee and the Northern Illinois clubs. The board needs your input. Do any of the ideas excite you? Do you have other ideas? Can you lead an event? Would you like more frequent meetings with programming?

We are looking at this meeting as a working meeting with lots of opportunity to share ideas with fellow club members and build friendships. Please join us.

Please RSVP to Gail Holmes

Number attending _____

I am bringing appetizer_____ Cookie/bars_____

I would like a ride _____ (we will do our best!!!)

Phone Gail at 608 249-1846 or email glholmes@wisc.edu

Friendship Force Wisconsin - Madison Goals for 2020

1. Recruit /add new members/retain new members - membership
 - a. Add new mentors and train
 - b. Develop measures of effectiveness
 - c. Increase membership diversity
 - d. Maintain and add to potential member list and work the list
2. Increase visibility in our community - outreach
 - a. Tell our stories/facebook, web , news, newsletter
 - b. Presentations and presence at events
 - c. Advertise events and activities
3. Journeys are primary tool to accomplish mission – journey coordinator
 - a. Increase membership participation in journey activities
 - b. Provide opportunities for hosts/ambassadors to share activities
 - c. Provide journey activities for a diverse membership
4. Activities Connect members and encourage participation in journeys activities
 - a. Provide a variety of membership and social club activities to engage a diverse membership
 - b. Increase participation of membership in social/club activities
5. Effective management/organization (Technology/board)
 - a. Increase use of eventbrite (or similar), mailchimp, square facebook; include payment & rsvp and provide training- Technology
 - b. Increase ways website can be used as tool- Technology
 - c. Obtain member feedback on technology/website Board
 - d. Blogging -Technology
 - e. Job descriptions for boards & committee chairs in board manual update/add – board &committee chairs
 - f. Committee chairs develop job descriptions for their volunteers Board
 - g. Mentor/train new leaders - transition

FFI WISCONSIN-MADISON BOARD CONTACT INFORMATION

Standing Committee Chairs

Membership: Helen Ann Rugowski 608-841-1087 haharrin@hotmail.com

Journey Coordinator: Stephanie Sorensen 608-819-1846 stevils@charter.net

Activities: Gail Holmes 608-249-1846 glholmes@wisc.edu

Outreach: Donna & Tom Miller 608-273-1501 miller1950@sbcglobal.net

Historian: Janet Lonergan 608-592-3336 janetlonergan@icloud.com

Communications: Sandi Wysock 608-833-5326 sandrawysock@msn.com

ACTIVITIES COMMITTEE INVITES YOU JOIN US IN PLANNING EVENT AND ACTIVITIES FOR MEMBERS

Because the Activities Committee has such a broad reach, we welcome you to join us in planning interesting, educational, active, service, and fun events for members and friends of the Friendship Force so we have an opportunity to get to know each other and develop our connections to FFI. Feel free to contact a leader and offer your assistance for any activity.

Members of the Activities Committee are:

Marian Ehrenberg (marianeh2014@gmail.com),

Gail Holmes (chair) (glholmes@wisc.edu),

Audrey Liimatainen (AMCL822@yahoo.com),

Lois Schulz (loisschulz1942@gmail.com) a

Leaders for specific activities listed below.

Adopt-A-Highway–Stephanie Vanden Bush (sljacobs2@gmail.com)

Bike rides–Mary Mastaglio (mamastaglio@gmail.com)

Book Club–Helen Ann Rugowski (haharrin@hotmail.com) and Bernie Long (bdlong@tds.net)

International Institutes–Helen Ann Rugowski (haharrin@hotmail.com)

Let's Eat Out (LEO)–Bobbie Vrooman (bobbiesque@gmail.com) \

Let's Hike/Let's Walk–Magdi Sebestyen (magdi.sebestyen@gmail.com)

Second Harvest Food Bank–Lois Schulz (loisschulz1942@gmail.com)

Travel trips–Donna Hussin (djhussin@yahoo.com)