



friendship force
WISCONSIN - MADISON

ffwis.org

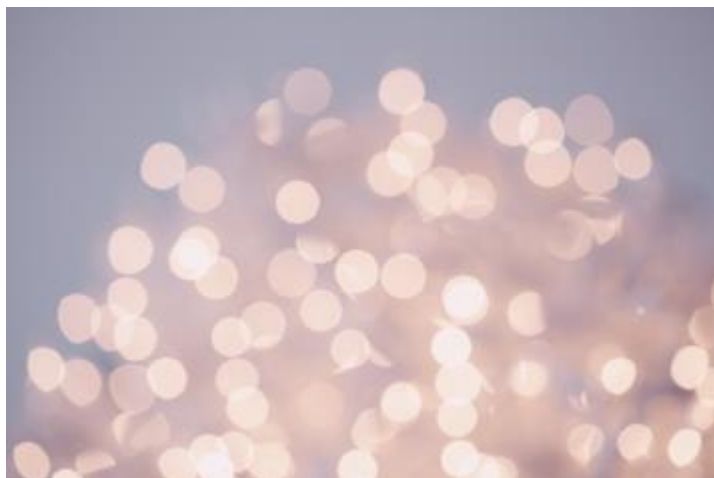
A NOTE FROM THE PRESIDENT

The holiday season is upon us, and we're cautiously inching forward toward more gatherings with family and friends. While we'll continue with our club's Covid-19 safety protocols for the foreseeable future, the outlook is promising for more in person programs, activities, and journeys in 2022. It's now time to renew your club membership for 2022. I encourage you to take this opportunity to let us know of additional ways that you'd like to be involved.

As 2021 draws to a close, I'd like to thank the board, committee chairs, committee members and myriad volunteers who have kept the club going during these challenging times! I've been impressed with your continued commitment to furthering our mission in the face of the headwinds of the past year and a half!

Best wishes for a wonderful holiday season! Looking forward to seeing many of you at the winter party in January.

Kathy Speck



Explore • Understand • Serve®



DECEMBER 2021

CALENDAR OF EVENTS

Monthly Board Meeting:

The FFI Madison Board meets VIRTUALLY on the second Thursday of the month @ 12:30 pm

December 2: Second Harvest. "Activities"

December 6: Holiday Cookie Party. "Activities"

January 6: Second Harvest. "Activities"

January 15: Winter Party Potluck. "Activities"

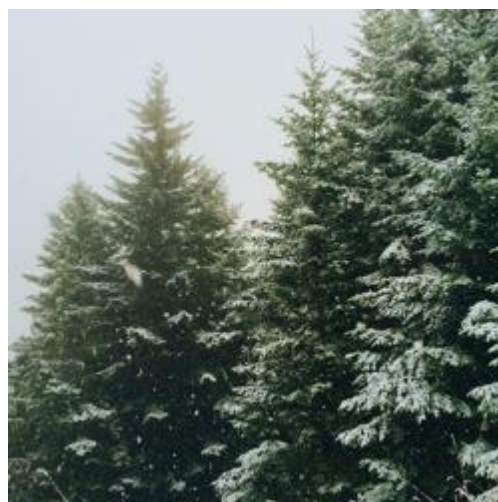
January 24: Book Club "Activities"

January 27: Second Harvest. "Activities"

Please check our website (ffwis.org) for any additions, updates, or corrections to event schedules during the month, and keep an eye out for email updates as well. We don't want you to miss anything!

We remind you that ZOOM support is available from FFI and from our club. View the FFI Zoom training video at <https://vimeo.com/436845540>.

Or Contact Peter Kaufman pkaufman@gmail.com



JOURNEYS

2022

An outgoing Journey to Toronto is **definitely** on for September of 2022. An outgoing Journey to Dallas along with an Iowa club is still a **possibility** in 2022 in either spring or fall. Our Journey Manager is working on scheduling.

Our postponed Bike Journey is still on our agenda for June 2022. All the elements are in place from 2021 so we hope for a successful 2022.

2023

Our current plan is to request to reschedule our outgoing Journey to New Zealand and to request to reschedule our incoming Oita, Japan as well as our Tweed Valley Australia Journeys in 2023.

None of these 2023 requests are promised because there are 2 - 3 years of cancelled Journeys to coordinate and it will be complicated for FFI as well as local clubs. But this is the current plan. Our assignments for 2023 may not be assigned until spring of 2022.

But you can now take out your suitcase and think about Toronto in less than a year! Two Ambassador Coordinators for the Toronto Journey are needed to work as a team. Anyone interested in volunteering to lead this Journey should contact the Journey Manager Stephanie Sorensen: ssorensen268@gmail.com or 608 819-6646.



Explore • Understand • Serve®

FACEBOOK UPDATE

Did you know that Friendship Force of Wisconsin-Madison has a Facebook page? It can be found by searching Facebook for Friendship Force of Wisconsin-Madison or following the link below. Please "like" our page so that you will see our posts.
<https://www.facebook.com/friendshipforcewis>

How far and fast does a message spread via Facebook?. Photos of our November Dining on the 6th were posted on our Facebook Page and the next day we had views from from San Diego, from Costa Rica, from Japan, from Canada, from Milwaukee, from Brazil, as well as from FFI Board members and Friendship Force of San Diego and Friendship Force of Toronto. The post has reached over 300 people! Facebook is not only a way to share with friends and members but it is also a way to get the word out about Friendship Force around the world.

ACTIVITIES

AFGHAN REFUGEE SUPPORT

Open Doors for Refugees is still collecting furniture and household items for furnishing new apartments for refugees. To see what items are needed, see their website:

<https://opendoorsforrefugees.org/contribute-furniture-household-items/>

FF Wisconsin-Madison is continuing to collect financial donations to support Afghan refugee resettlement. Your checks should be made out to FF Wisconsin-Madison with a note on the check that it is for Afghan refugees and send checks to:

The Friendship Force of Wisconsin-Madison
5809 Julia St
Madison, WI 53705
www.ffwis.org

Member questions may be addressed to the Refugee Support Committee:

Dorothy Baldwin
janddbaldwin@gmail.com

Lise Skofronick
liserskofronick@gmail.com

Sandy Drew
sdrew24@tds.net

Agnes Rona
whereowhere5@gmail.com

ACTIVITIES

DINING ON THE SIXTH / HOLIDAY COOKIE SHARING

Please bake a favorite cookie or bar and show off your tradition – Norwegian? French? German? Finnish, Polish, Irish? Was this recipe handed down from your grandma or is it one you created for your own family tradition? Is there a great story associated with this famous cookie?

On December 6, we will gather around our computers / tablets / iPhones and ZOOM-share plates of our holiday confections on camera and explain what it is and why we chose to make it as part of our holidays.

This party is simple and similar to what we did last January with chocolate and wine/beer. To participate in the holiday cheer please send your name to Lise Skofronick by December 3d so you can receive the ZOOM link for the event. Lise Skofronick: 608-274-7732 – home landline with voicemail / liserskofronick@gmail.com

If you wish to share your recipes, please email them to Lise and she will collate them and forward them to the participants.

* * * *

On November 6 at 5:30 pm we may have had a record number of Dining on the Sixth participants at Imperial Gardens in Middleton. Twenty-six people registered for the event. Conversation wrapped up just before 8 pm.



Explore • Understand • Serve®

ACTIVITIES

BOOK CLUB



There will be no Book Club meeting until January 24th at 7:00 pm on ZOOM. That gives you lots of time to read "My Forbidden Face – Growing Up Under the Taliban" by Latifa. It is available at the local library or on Amazon if you wish to buy it.

Google says that the book "..... provides a poignant and highly personal account of life under the Taliban regime. With painful honesty and clarity Latifa describes the way she watched her world falling apart, in the name of a fanatical interpretation of a faith that she could not comprehend."

Email Marian Ehrenberg at: marianeh2014@gmail.com by November 24 for the Zoom key.

SECOND HARVEST FOODBANK

Scheduling has been slightly changed to accommodate the holidays in November and December.

Our next day of service is December 2, from 12:30 to 3:30 p.m. at 2802 Dairy Drive. Notify leader Lois Schulz (loisschulz1942@gmail.com) know of your interest by November 29. We will also be at Second Harvest on January 6 and January 27, working around holiday schedules.

Second Harvest has a continuing need for more volunteers in order to continue to carry out its urgent mission to provide food and meals to food-insecure residents of Madison and Dane County.

LET'S WALK / LETS HIKE

Maureen Kind is the new leader of this activity. Using the list of walkers/hikers interested in pop-up events, Maureen will offer a few events on level terrain and of shorter duration due to unpredictable winter weather. Welcome Maureen and many thanks to Magdi Sebestyen for creating and having led this great activity. If you are not already on the list, ask Maureen to include you:

dmkind@sbcglobal.net

ACTIVITIES

SKIING AND SNOW-SHOEING

Tamas Gaal will continue to offer pop-up winter activities. If you are not already on Tamas' pop-up list, let him know of your interest at: tgaal@wisc.edu.

WINTER POTLUCK PARTY

On Saturday January 15, 2022, from 11:30 am until 3 pm FF Wisconsin-Madison members will enjoy a winter potluck party at the Fitchburg Library, 5530 Lacy Road.

Social time begins at 11:30, and potluck at noon. You are asked to contribute a main dish, salad, vegetable, dessert or a favorite specialty.

Mike Lambert of the Programs Committee will offer us an international trivia game program, so be prepared to have fun and test your knowledge.

KNOW YOUR MEMBERS

JERRY AND BETTY FULLER



When given an assignment Jerry and Betty Fuller are motivated, over-achieving students! After receiving an invitation to share their experiences for a newsletter article, this veteran Friendship Force (FF) couple replied with a 12-page document of memories and musings! Space does not allow for the publication of the complete document, but below are a few highlights.

In 1982 Jerry and Betty saw a newspaper article in which Friendship Force - Wisconsin was looking for host families for 150 Germans visiting Madison. The couple accepted two women into their home, initiating a nearly forty-year involvement with FF. Their passion for travel has taken them to all 50 states, 11 Canadian Provinces, and 67 countries. Friendship Force was significant to their travels and offered them "a wonderful way to meet people and learn" about other cultures.

KNOW YOUR MEMBERS

JERRY AND BETTY FULLER

In addition to participating in many FF journeys with the Madison and other US clubs, the couple attended several FF international conferences. Jerry was the Exchange Director for four Madison outbound journeys, including trips to the Netherlands, Cuba, South Korea, and Turkey.

A favorite memory was their trip to Zeeland in the Netherlands. On an early morning walk, Jerry encountered a man wearing wooden shoes. Knowing it was extremely rare for Netherlandsers to wear wooden shoes, he accused his host of hiring this man to wear wooden shoes and walk past the house! Later that day, Jerry saw a woman in wooden shoes working in her garden. Convinced that people really do wear wooden shoes for daily activities, Jerry later found a shop that made the shoes and bought a pair to take home.

Jerry and Betty also reflected on their Cuban trip. A condition for this visit was to provide cash subsidies to the government-sponsored host club. Despite very challenging conditions, Cuban host families graciously accommodated the US Ambassadors and showed them around the beautiful island.

Recognizing the importance of meeting young people and visiting schools, Jerry always included school visits in journeys he arranged. During a trip to South Korea, the FF group visited the Korea Tourism Senior High School where students trained for future work in the hospitality industry. At the school, 4-5 students were assigned to each Ambassador. Not only did the students give a tour of the school and arrange for observations of the Japanese, Chinese, and English language classes, but they also hosted lunch and helped the Ambassadors participate in the school casino! On a visit to a school in Turkey, Jerry and Betty asked the 40 Ambassadors to each bring books written in English to donate as gifts to the school library.

Like many FF travelers, Jerry and Betty encountered a remarkable "it's-a-small-world" experience. When coming across a large herd of cattle crossing a roadway in Australia, Jerry talked to the rancher and complemented his handsome herd. The rancher asked Jerry where he was from, and Jerry responded, "the US." The rancher continued with, "Where in the US? Where in the Midwest? Where in Wisconsin?" until the pair discovered that the rancher had visited Jerry and Betty's hometown, DeForest! The rancher had attended the American Breeders Service Forum and purchased serum for his herd.

Explore • Understand • Serve®

KNOW YOUR MEMBERS

JERRY AND BETTY FULLER

Another “small world” moment occurred during a domestic journey to Helena, Montana, where Jerry and Betty stayed with a widow whose deceased husband invented the Holter Monitor, a device used for heart conditions. Jerry had used this monitor for a medical condition.

Reflecting on their extensive travels, Jerry and Betty commented: “Of the numerous travels we have experienced, on our own, with FF and with other organizations, the FF model of homestay plus country tour is absolutely the most fulfilling, with the homestay being the reason for the very best experience.” If you would like to read more about Jerry and Betty’s travel experiences, please contact them for a copy of their 12-page “memories and musings.” (bjfuller@centurytel.net)

Explore • Understand • Serve®

BOARD CONTACT INFORMATION

Standing Committee Chairs

Activities: Gail Holmes 608-249-1846 glholmes@wisc.edu

Communications: Sandi Wysock 608-833-5326 sandrawysock@msn.com

Journey Manager: Stephanie Sorensen 608-819-6646
ssorensen268@gmail.com

Membership: Lise R. Skofronick 608-274-7732
liserskofronick@gmail.com

Outreach: Dorothy Baldwin 608-742-6493 janddbaldwin@gmail.com

Programs:

Mike Lambert (608)-577-1057
lambertmichaelj@gmail.com

COMMITTEE MEMBERS & ACTIVITY LEADERS

Activities Committee Members:

Gail Holmes (chair) (glholmes@wisc.edu),
Audrey Liimatainen (AMCL822@yahoo.com),
Lois Schulz (loisschulz1942@gmail.com)

Leaders for specific activities are:

Adopt-A-Highway – Stephanie Vanden Bush (sljacobs2@gmail.com)

Bike Rides – Jan Hornback (jhornback@wisc.edu)

Book Club – Reta Haring (retaharring@charter.net) and Marian Ehrenberg
(marianeh2014@gmail.com)

Day trips–Donna Hussin (djhussin@yahoo.com)

Dining on the 6th – Gail Holmes (glholmes@wisc.edu)

International Institutes – Sandi Wysock sandrawysock@msn.com

Let's Eat Out (LEO) – Bobbie Vrooman (bobbiesque@gmail.com)

Second Harvest Food Bank–Lois Schulz (loisschulz1942@gmail.com)

Winter Snowshoeing/Cross-Country Skiing--Tamas Gaal (tgaal@wisc.edu)

WISCONSIN FRIENDSHIP
Official Publication of
The Friendship Force of Wisconsin-Madison
5809 Julia St
Madison, WI 53705
www.ffwis.org

Email Accounts:

ffwis.general@gmail.com

ffwis.meeting@gmail.com

ffwis.membership@gmail.com

ffwis.outreach@gmail.com

President: Kathy Speck
608-577-4885

Vice President: Doug Johnson
608-238-1785

Secretary: Sandy Drew
608-286-8895

Treasurer: Mary Juckem
608-661-2810

Newsletter: Agnes Rona
781-910-1094

Members at Large: Peter Kaufman 608-848-3737
Donna Ulteig 608-249-0022